

VALVOLE AD AZIONAMENTO ELETTOPNEUMATICO



SOLENOID PILOT VALVE
ELEKTROPNEUMATISCHE VENTILE
DISTRIBUTEURS ÉLECTROPNEUMATIQUES
VÁLVULAS DE ACCIONAMIENTO ELECTRONEUMÁTICO
VÁLVULAS DE ACIONAMENTO ELETRO-PNEUMÁTICO



CARATTERISTICHE TECNICHE

TECHNICAL CHARACTERISTICS
TECHNISCHE ANGABEN
CARACTÉRISTIQUES TECHNIQUES
CARACTERÍSTICAS TÉCNICAS
CARACTERÍSTICAS TÉCNICAS



Norma di Riferimento

Reference standard

Entspricht der Norm

Norme de référence

Normativa de referencia

Norma de referência

1907/2006



2011/65/CE



II 2GD Ex h IIC T6



ATEX
2014/34/UE

PED
2014/68/UE



	1/8	1/4	1/2
<p>ATTACCO FILETTATO ROSCA ANSCHLUSS CONNEXION ROSCA CONEXÃO ROSCADA</p>	1/8	1/4	1/2
<p>PORTATA a 6 BAR con Δp 1 bar 6 bar FLOW RATE with Δp 1 bar DURCHFLOßWERT BEI 6 bar mit Δp 1 bar DÉBIT DE RÉFÉRENCE à 6 bar avec Δp 1 bar CAUDAL a 6 BAR con Δp 1 bar VAZÃO a 6 BAR com Δp 1 bar</p>	740 NI/min	1200 NI/min	5000 NI/min
<p>PRESSIONE DI FUNZIONAMENTO OPERATING PRESSURE BETRIEBSDRUCK PRESSION DE SERVICE PRESION DE EJERCICIO PRESSÃO DE OPERAÇÃO</p>	Monostable	2 ÷ 10 bar	
	Bistable	1 ÷ 10 bar	
<p>TEMPERATURA TEMPERATURE BETRIEBSTEMPERATUR TEMPÉRATURE DE TRAVAIL TEMPERATURA TEMPERATURA</p>	min	-10 °C	
	max	+60 °C	
<p>TENSIONE SOLENOIDE SOLENOID VOLTAGE SPANNUNG DER MAGNETSPULEN TENSION DE LA BOBINE TENSÓN SOLENOIDE TENSÃO DA SOLENOIDE</p>	24V DC - 12V DC - 24V AC - 110V AC - 220V AC		
<p>POTENZA MINIMA MINIMUM POWER MIN. LEISTUNG PUISSANCE MIN. POTÊNCIA MÍNIMA POTÊNCIA MÍNIMA</p>	2W - 3VA		
<p>COMANDO MANUALE MANUAL CONTROL MANUELLE BETÄTIGUNG COMMANDE MANUELLE COMANDO MANUAL ACIONAMENTO MANUAL</p>	BISTABILE BISTABLE BISTABIL BISTABLE BIESTABLE BIESTÁVEL		
<p>COPPIA DI SERRAGGIO DELLA GHIERA SUL SOLENOIDE TORQUE OF TIGHTENING THE NUT SOLENOID ANZUGSDREHMOMENT DER SPULENBEFESTIGUNGSMUTTER COUPLE DE SERRAGE DES VIS DE FIXATION DES BOBINES PAR DE APRIETE TUERCA SOBRE LA BOBINA TORQUE DE APERTO DA PORCA DA SOLENOÍDE</p>	0.6 Nm		

Materiali e Componenti IT

- 1 Corpo in alluminio anodizzato e verniciato
- 2 Spola in alluminio nichelato chimicamente
- 3 Guarnizioni in NBR

Component Parts and Materials GB

- 1 Anodised and painted aluminium body
- 2 Chemical nickel-plated spool
- 3 NBR seals

Komponenten und Materialien DE

- 1 Aluminiumgehäuse Eloxiert Und Lackiert
- 2 Schieber Aus Aluminium, Chemisch Vernickelt
- 3 Dichtungen Aus NBR

Matériaux et Composants FR

- 1 Corps en aluminium anodisé et peint
- 2 Tiroir en aluminium, nickelé chimique
- 3 Joints en NBR

Materiales y Componentes ES

- 1 Cuerpo en aluminio anodizado y barnizado
- 2 Corredera en aluminio niquelado químicamente
- 3 Juntas en NBR

Materiais e Componentes PT

- 1 Corpo em alumínio anodizado e pintado
- 2 Carretel em alumínio niquelado quimicamente
- 3 Vedações em NBR


Tabella dei codici di ordinazione
Ordering codes
Bestellschlüssel
Code de commande
Tabla de codificación para pedidos
Tabela de codificação para compra

SERIE	Azionamento <i>Actuation</i> <i>Betätigung</i> <i>Actionnement</i> <i>Accionamiento</i> <i>Acionamento</i>	Riazionamento <i>Reactuation</i> <i>Rückstellung</i> <i>Rappel</i> <i>Reaccionamiento</i> <i>Retorno</i>	Vie <i>Ways</i> <i>Wege</i> <i>Voies</i> <i>Vias</i> <i>Vias</i>	Funzione <i>Function</i> <i>Funktion</i> <i>Fonction</i> <i>Función</i> <i>Funções</i>	Misura <i>Size</i> <i>Größe</i> <i>Dimension</i> <i>Medida</i> <i>Tamanho</i>
-------	---	---	---	---	--

0 1 V
S

S = Solenoide
Solenoid
Magnetspule
Bobine
Solenóide
Solenóide

0

0 = Monostabile con ritorno a molla
Monostable spring return
Monostabil mit Federrückstellung
Monostable à rappel par ressort
Monoestable con retorno muelle
Monoestável com retorno por mola

3

3 = 3/2
5 = 5/2
7 = 5/3

N C

NO = Normalmente aperta
Normally open
Normalerweise offen
Normalement ouvert
Normalmente abierta
Normalmente aberta

NC = Normalmente chiusa
Normally closed
Normalerweise geschlossen
Normalement fermé
Normalmente cerrada
Normalmente fechada

CC = Centri chiusi
Center closed
Mittelstellung geschlossen
Centre fermé
Centros cerrados
Centro fechado

OC = Centri aperti
Center exhausted
Mittelstellung offen
Centre ouvert
Centros abiertos
Centro-aberto negativo

PC = Centri in pressione
Center in pressurized
Mittelstellung unter Druck
Centre sous pression
Centros en presión
Centro aberto positivo

00 = Funzione non contemplata
Function not provided
Funktion steht nicht zur Verfügung
Fonction non disponible
Función no contemplada
Função não contemplada

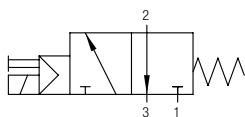
0 2

02 = 1/8
03 = 1/4
05 = 1/2

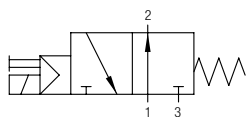
3/2 Vie - Ways - Wege - Voies - Vías - Vias

New

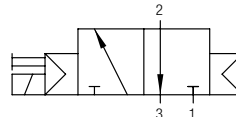
MONOSTABILE
 MONOSTABLE
 MONOSTABIL
 MONOSTABLE
 MONOESTABLE
 MONOESTÁVEL



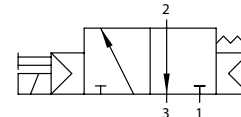
NC



NO



NC



SPRING

Codice Code Nummer Code Código	Vie Ways Wege Voies Vías	Funzione Function Funktion Fonction Función Funções	Misura Size Größe Dimension Medida Tamanho	Pack.
--	--------------------------------------	--	---	-------

01V S0 3 NC 02	3/2	NC	1/8	1
01V S0 3 NC 03	3/2	NC	1/4	1
01V S0 3 NC 05	3/2	NC	1/2	1

01V S0 3 NO 02	3/2	NO	1/8	1
01V S0 3 NO 03	3/2	NO	1/4	1
01V S0 3 NO 05	3/2	NO	1/2	1

Monostabile con ritorno a molla - Monostable spring return - Monostabil mit Federückstellung - Monostable à rappel par ressort - Monoestable con retorno muelle - Monoestável com retorno por mola

Codice Code Nummer Code Código	Vie Ways Wege Voies Vías	Funzione Function Funktion Fonction Función Funções	Misura Size Größe Dimension Medida Tamanho	Pack.
--	--------------------------------------	--	---	-------

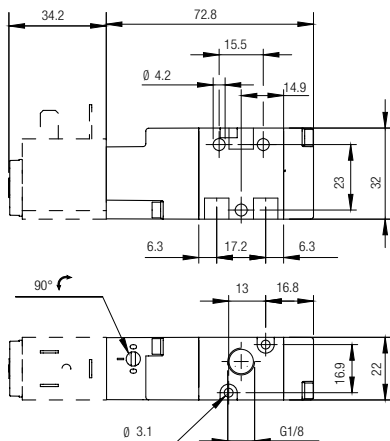
01V S4 3 NC 02	3/2	NC	1/8	1
01V S4 3 NC 03	3/2	NC	1/4	1

Ritorno pneumatico - Pneumatic return - Pneumatische Rückhubsperr - Retour pneumatique - Retorno neumático - Retorno pneumático

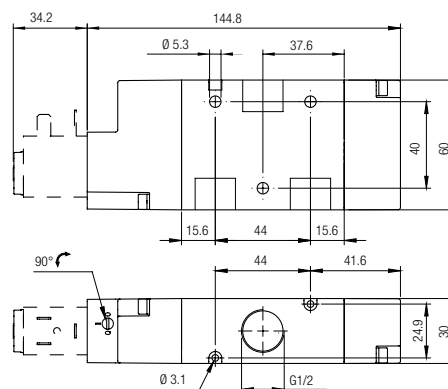
01V S5 3 NC 02	3/2	NC	1/8	1
01V S5 3 NC 03	3/2	NC	1/4	1

Ritorno pneumatico + molla - Spring Pneumatic return - Pneumatische Rückhubsperr federbelastete - Retour pneumatique à ressort - Retorno neumático de resorte - Retorno pneumático de mola

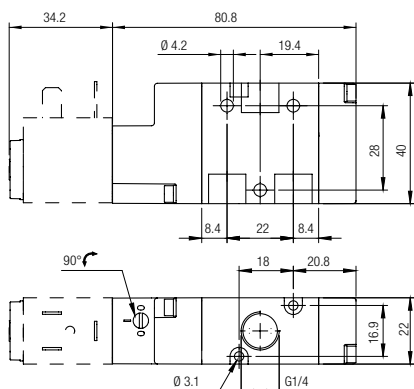
01V S0 3 NC 02 01V S0 3 NO 02
01V S4 3 NC 02 01V S5 3 NC 02



01V S0 3 NC 05 01V S0 3 NO 05



01V S0 3 NC 03 01V S0 3 NO 03
01V S4 3 NC 03 01V S5 3 NC 03



3/2 Vie - Ways - Wege - Voies - Vías - Vias

BISTABILE

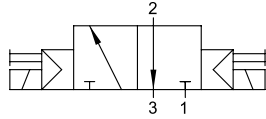
TWO STABLE POSITIONS

BISTABIL

BISTABLE

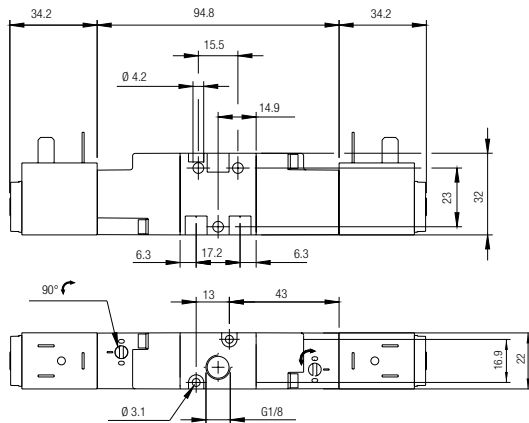
BIESTABLE

BIESTÁVEL

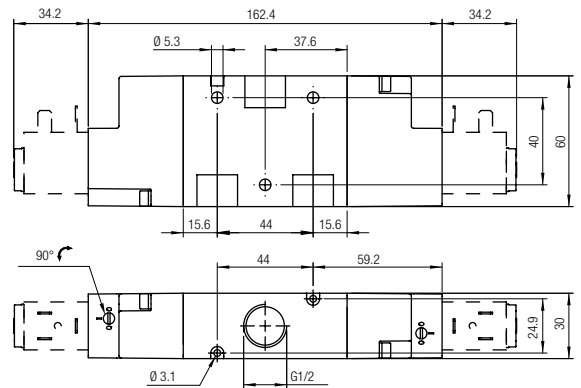


Codice Code Nummer Code Código Código	Vie Ways Wege Voies Vías Vias	Misura Size Größe Dimensión Medida Tamanho	Pack.
01V S1 3 00 02	3/2	1/8	1
01V S1 3 00 03	3/2	1/4	1
01V S1 3 00 05	3/2	1/2	1

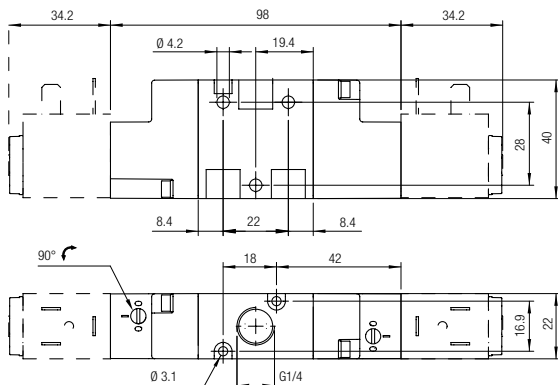
01V S1 3 00 02



01V S1 3 00 05



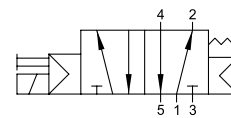
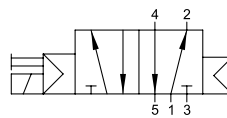
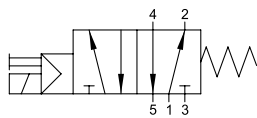
01V S1 3 00 03



5/2 Vie - Ways - Wege - Voies - Vías - Vias

New

MONOSTABILE
 MONOSTABLE
 MONOSTABIL
 MONOSTABLE
 MONOESTABLE
 MONOESTÁVEL



SPRING

Codice Code Nummer Code Código Código	Vie Ways Wege Voies Vías Vias	Misura Size Größe Dimension Medida Tamanho	Pack.
01V S0 5 00 02	5/2	1/8	1
01V S0 5 00 03	5/2	1/4	1
01V S0 5 00 05	5/2	1/2	1

Codice Code Nummer Code Código Código	Vie Ways Wege Voies Vías Vias	Misura Size Größe Dimension Medida Tamanho	Pack.
01V S4 5 00 02	5/2	1/8	1
01V S4 5 00 03	5/2	1/4	1

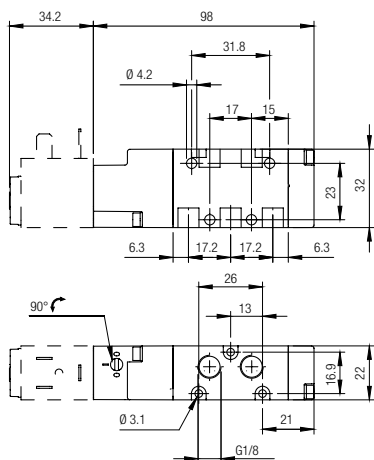
Monostabile con ritorno a molla - Monostable spring return - Monostabil mit Federrückstellung - Monostable à rappel par ressort - Monoestable con retorno muelle - Monoestável com retorno por mola

Ritorno pneumatico - Pneumatic return - Pneumatische Rückhubsperr - Retour pneumatique - Retorno neumático

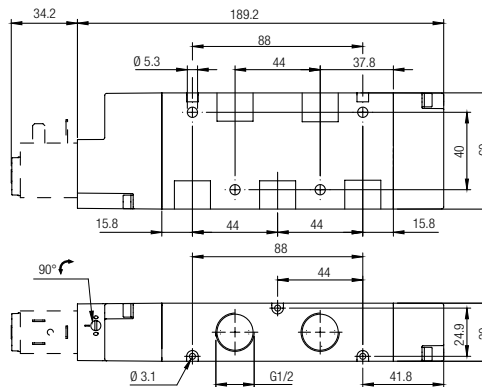
01V S5 5 00 02	5/2	1/8	1
01V S5 5 00 03	5/2	1/4	1

Ritorno pneumatico + molla - Spring Pneumatic return - Pneumatische Rückhubsperr federbelastete - Retour pneumatique à ressort - Retorno neumático de resorte - Retorno pneumático de mola

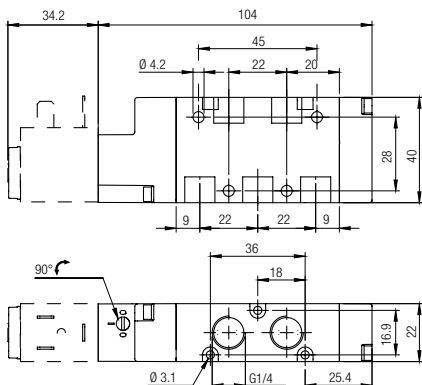
01V S0 5 00 02 01V S4 5 00 02 01V S5 5 00 02



01V S0 5 00 05



01V S0 5 00 03 01V S4 5 00 03 01V S5 5 00 03



5/2 Vie - Ways - Wege - Voies - Vías - Vias

BISTABILE

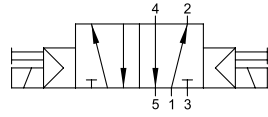
TWO STABLE POSITIONS

BISTABIL

BISTABLE

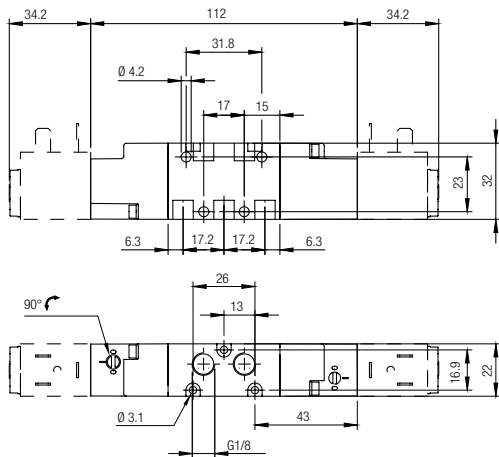
BIESTABLE

BIESTÁVEL

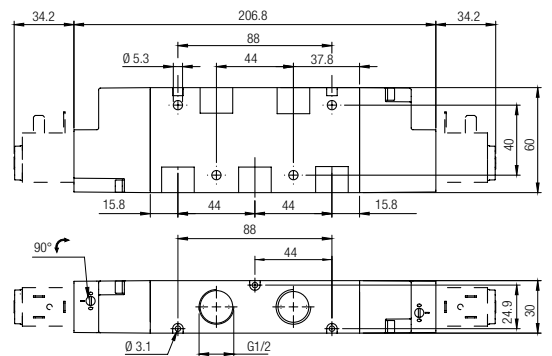


Codice Code Nummer Code Código Código	Vie Ways Wege Voies Vías Vias	Misura Size Größe Dimension Medida Tamanho	Pack.
01V S1 5 00 02	5/2	1/8	1
01V S1 5 00 03	5/2	1/4	1
01V S1 5 00 05	5/2	1/2	1

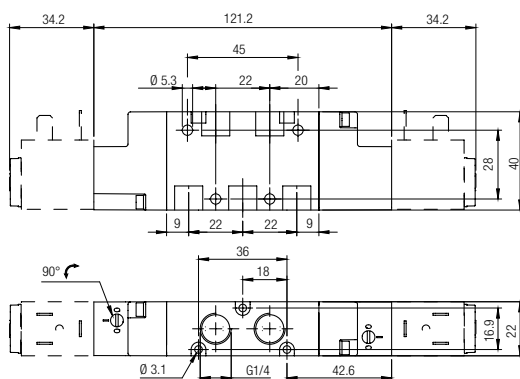
01V S1 5 00 02



01V S1 5 00 05



01V S1 5 00 03



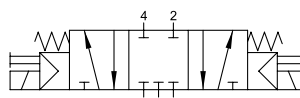
5/3 Vie - Ways - Wege - Voies - Vías - Vias

MONOSTABILE CON RITORNO A MOLLA

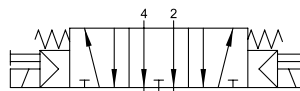
MONOSTABLE SPRING RETURN
 MONOSTABIL MIT FEDERRÜCKSTELLUNG
 MONOSTABLE À RAPPEL PAR RESSORT
 MONOESTABLE CON RETORNO POR MUELLE
 MONOESTÁVEL COM RETORNO POR MOLA



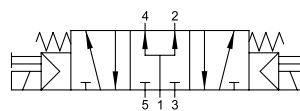
Codice Code Nummer Code Código Código	Vie Ways Wege Voies Vías Vias	Funzione Function Funktion Función Función Funções	Misura Size Größe Dimension Medida Tamanho	Pack.
01V S0 7 CC 02	5/3	CC	1/8	1
01V S0 7 CC 03	5/3	CC	1/4	1
01V S0 7 CC 05	5/3	CC	1/2	1
01V S0 7 OC 02	5/3	OC	1/8	1
01V S0 7 OC 03	5/3	OC	1/4	1
01V S0 7 OC 05	5/3	OC	1/2	1
01V S0 7 PC 02	5/3	PC	1/8	1
01V S0 7 PC 03	5/3	PC	1/4	1
01V S0 7 PC 05	5/3	PC	1/2	1



CC

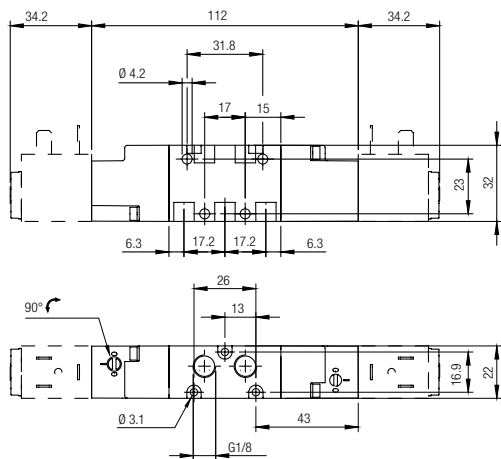


OC

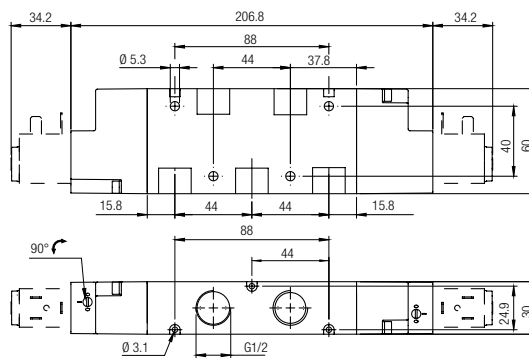


PC

01V S0 7 CC 02 01V S0 7 OC 02 01V S0 7 PC 02



01V S0 7 CC 05 01V S0 7 OC 05 01V S0 7 PC 05



01V S0 7 CC 03 01V S0 7 OC 03 01V S0 7 PC 03

