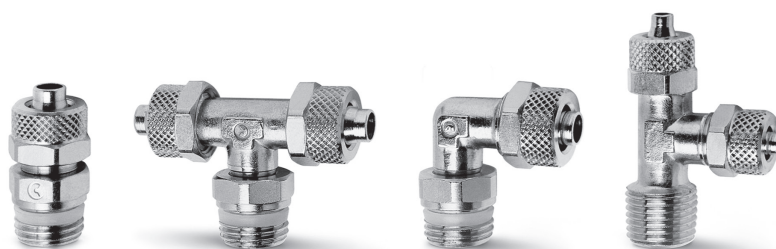


Raccordi a calzamento per tubi plastici Serie 1000

Diametri esterni tubo: 5/3, 6/4, 8/6, 10/8, 12/10, 15/12,5 mm

Filetti dei raccordi: metrici (M5, M6, M12 x1, M12 x1,25), cilindrici (G1/8, G1/4, G3/8, G1/2), conici (R1/8, R1/4, R3/8, R1/2)

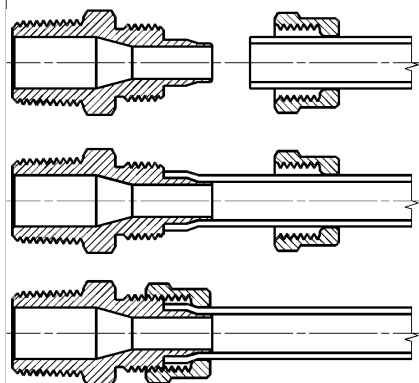


I raccordi rapidi della Serie 1000 a calzamento sono di facile installazione. I dadi di serraggio del calzamento si possono stringere con le mani oppure con l'ausilio di una chiave anche con tubi rigidi come il PA e il Poliestere Hytrel. La particolare forma del cono di conduzione evita possibili tagli del tubo.

CARATTERISTICHE GENERALI

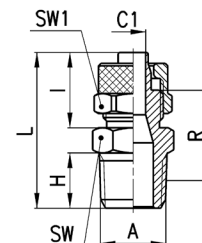
| | |
|-----------------------------|---|
| Materiale | corpo e dado: OT nichelato; O-ring: NBR; guarnizioni filetto: PTFE - PA, AL |
| Filettature | GAS conico ISO 7 (BSPT) GAS cilindrico ISO 228 (BSP) M5 - M6 NPT e metrico su richiesta |
| Pressione | la pressione nominale dei raccordi è sempre superiore alla pressione di utilizzo del tubo |
| Tubo di collegamento | PA polietilene, PVC intrecciato, rilsan, PU, Poliestere Hytrel |
| Diametri | 5/3 - 6/4 - 8/6 - 10/8 - 12/10 - 15/12,5 mm |
| Fluido | aria compressa e fluidi a bassa pressione |
| Temperatura | -20°C + 80°C NB: per un utilizzo ottimale del raccordo è opportuno verificare le caratteristiche dei tubi impiegati. |

Raccordo con tubo di collegamento



Raccordi Mod. 1510

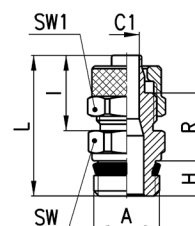
Diritto Maschio Metrico-Conico



| DIMENSIONI | | | | | | | | | | |
|-------------------|---------|----------|-----|------|------|------|------|----|-----|----------|
| Mod. | Tubo | A | C1 | H | I | L | R | SW | SW1 | Peso (g) |
| 1510 5/3-1/8 | 5/3 | R1/8 | 2 | 7,5 | 12,5 | 24,5 | 14,5 | 12 | 8 | 10 |
| 1510 6/4-1/8 | 6/4 | R1/8 | 3 | 7,5 | 15 | 27 | 16 | 12 | 12 | 15 |
| 1510 6/4-1/4 | 6/4 | R1/4 | 3 | 11 | 15 | 31 | 18,5 | 14 | 12 | 19 |
| 1510 6/4-3/8 | 6/4 | R3/8 | 3 | 11,5 | 15 | 31,5 | 18,5 | 17 | 12 | 22 |
| 1510 6/4-1/2 | 6/4 | R1/2 | 3 | 14 | 15 | 34,5 | 20 | 22 | 12 | 38 |
| 1510 6/4-M12x1,25 | 6/4 | M12X1,25 | 3 | 10 | 15 | 30 | 18 | 13 | 12 | 17 |
| 1510 8/6-1/8 | 8/6 | R1/8 | 5 | 7,5 | 15 | 27 | 16 | 13 | 14 | 19 |
| 1510 8/6-1/4 | 8/6 | R1/4 | 5 | 11 | 15 | 31 | 18,5 | 14 | 14 | 20 |
| 1510 8/6-3/8 | 8/6 | R3/8 | 5 | 11,5 | 15 | 31,5 | 18,5 | 17 | 14 | 25 |
| 1510 8/6-1/2 | 8/6 | R1/2 | 5 | 14 | 15 | 34,5 | 20 | 22 | 14 | 39 |
| 1510 10/8-1/8 | 10/8 | R1/8 | 6,5 | 7,5 | 16,5 | 28,5 | 16,5 | 14 | 16 | 24 |
| 1510 10/8-1/4 | 10/8 | R1/4 | 6,5 | 11 | 16,5 | 32,5 | 19 | 14 | 16 | 24 |
| 1510 10/8-3/8 | 10/8 | R3/8 | 6,5 | 11,5 | 16,5 | 33 | 19 | 17 | 16 | 27 |
| 1510 10/8-1/2 | 10/8 | R1/2 | 6,5 | 14 | 16,5 | 36 | 20,5 | 22 | 16 | 42 |
| 1510 12/10-3/8 | 12/10 | R3/8 | 8,5 | 11,5 | 18 | 34,5 | 19 | 17 | 19 | 35 |
| 1510 12/10-1/2 | 12/10 | R1/2 | 8,5 | 14 | 18 | 37,5 | 20,5 | 22 | 19 | 49 |
| 1510 15/12,5-1/2 | 15/12,5 | R1/2 | 11 | 14 | 20 | 39,5 | 21 | 22 | 22 | 55 |

Raccordi Mod. 1511

Diritto Maschio Metrico Sprint®

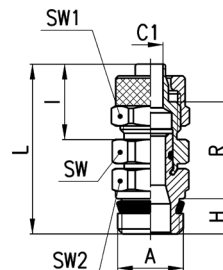


| DIMENSIONI | | | | | | | | | | |
|------------------|---------|------|-----|-----|------|------|------|----|-----|----------|
| Mod. | Tubo | A | C1 | H | I | L | R | SW | SW1 | Peso (g) |
| 1511 5/3-M5 | 5/3 | M5 | 2 | 4 | 12,5 | 21 | 10,5 | 8 | 8 | 5 * |
| 1511 5/3-M6 | 5/3 | M6 | 2 | 4 | 12,5 | 21 | 10,5 | 9 | 8 | 5 * |
| 1511 5/3-1/8 | 5/3 | G1/8 | 2 | 5,5 | 12,5 | 23,8 | 11,8 | 12 | 8 | 10 |
| 1511 6/4-M5 | 6/4 | M5 | 3 | 4 | 13,5 | 22 | 10,5 | 8 | 9 | 6 * |
| 1511 6/4-M6 | 6/4 | M6 | 3 | 4 | 13,5 | 22 | 10,5 | 9 | 9 | 7 * |
| 1511 6/4-1/8 | 6/4 | G1/8 | 3 | 5,5 | 15 | 26,3 | 13,3 | 12 | 12 | 15 |
| 1511 6/4-1/4 | 6/4 | G1/4 | 3 | 7 | 15 | 28 | 13,5 | 14 | 12 | 16 |
| 1511 6/4-3/8 | 6/4 | G3/8 | 3 | 8 | 15 | 29,3 | 13,8 | 19 | 12 | 27 |
| 1511 8/6-1/8 | 8/6 | G1/8 | 5 | 5,5 | 15 | 26,3 | 13,3 | 12 | 14 | 17 |
| 1511 8/6-1/4 | 8/6 | G1/4 | 5 | 7 | 15 | 28 | 13,5 | 14 | 14 | 18 |
| 1511 8/6-3/8 | 8/6 | G3/8 | 5 | 8 | 15 | 29,3 | 13,8 | 19 | 14 | 27 |
| 1511 10/8-1/8 | 10/8 | G1/8 | 6,5 | 5,5 | 16,5 | 27,8 | 13,8 | 14 | 16 | 23 |
| 1511 10/8-1/4 | 10/8 | G1/4 | 6,5 | 7 | 16,5 | 29,5 | 14 | 14 | 16 | 25 |
| 1511 10/8-3/8 | 10/8 | G3/8 | 6,5 | 8 | 16,5 | 30,8 | 14,3 | 19 | 16 | 30 |
| 1511 10/8-1/2 | 10/8 | G1/2 | 6,5 | 9 | 16,5 | 32,5 | 15 | 22 | 16 | 36 |
| 1511 12/10-3/8 | 12/10 | G3/8 | 8,5 | 8 | 18 | 32,3 | 14,3 | 19 | 19 | 39 |
| 1511 12/10-1/2 | 12/10 | G1/2 | 8,5 | 9 | 18 | 34 | 15 | 22 | 19 | 42 |
| 1511 15/12,5-1/2 | 15/12,5 | G1/2 | 11 | 9 | 20 | 36 | 15,5 | 22 | 22 | 52 |

* = con O-Ring

Raccordi Mod. 1560

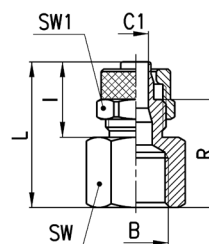
Diritto Maschio Girevole Sprint®



| DIMENSIONI | | | | | | | | | | | |
|----------------|-------|------|-----|-----|------|------|------|----|-----|-----|----------|
| Mod. | Tubo | A | C1 | H | I | L | R | SW | SW1 | SW2 | Peso (g) |
| 1560 6/4-1/8 | 6/4 | G1/8 | 3 | 5,5 | 15 | 31 | 18 | 12 | 12 | 12 | 19 |
| 1560 6/4-1/4 | 6/4 | G1/4 | 3 | 7 | 15 | 32,5 | 18 | 12 | 12 | 14 | 25 |
| 1560 8/6-1/8 | 8/6 | G1/8 | 5 | 5,5 | 15 | 32 | 19 | 13 | 14 | 12 | 21 |
| 1560 8/6-1/4 | 8/6 | G1/4 | 5 | 7 | 15 | 33,5 | 19 | 13 | 14 | 14 | 26 |
| 1560 10/8-1/4 | 10/8 | G1/4 | 6,5 | 7 | 16,5 | 34,5 | 19 | 14 | 16 | 14 | 27 |
| 1560 10/8-3/8 | 10/8 | G3/8 | 6,5 | 8 | 16,5 | 36 | 19,5 | 14 | 16 | 19 | 38 |
| 1560 12/10-3/8 | 12/10 | G3/8 | 6,5 | 8 | 18 | 38 | 20 | 17 | 19 | 19 | 46 |

Raccordi Mod. 1463

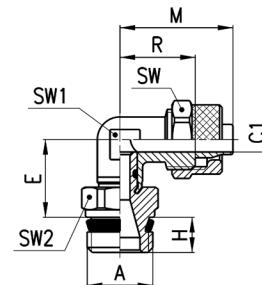
Diritto Femmina Cilindrico



| DIMENSIONI | | | | | | | | | | |
|----------------|-------|------|-----|------|------|------|----|-----|----------|--|
| Mod. | Tubo | B | C1 | I | L | R | SW | SW1 | Peso (g) | |
| 1463 5/3-1/8 | 5/3 | G1/8 | 2 | 12,5 | 22,5 | 16 | 13 | 8 | 10 | |
| 1463 6/4-1/8 | 6/4 | G1/8 | 3 | 15 | 25 | 17,5 | 13 | 12 | 14 | |
| 1463 6/4-1/4 | 6/4 | G1/4 | 3 | 15 | 26,5 | 19 | 17 | 12 | 21 | |
| 1463 6/4-3/8 | 6/4 | G3/8 | 3 | 15 | 27,5 | 20 | 20 | 12 | 25 | |
| 1463 8/6-1/8 | 8/6 | G1/8 | 5 | 15 | 25 | 17,5 | 13 | 14 | 16 | |
| 1463 8/6-1/4 | 8/6 | G1/4 | 5 | 15 | 26,5 | 19 | 17 | 14 | 22 | |
| 1463 8/6-3/8 | 8/6 | G3/8 | 5 | 15 | 27,5 | 20 | 20 | 14 | 26 | |
| 1463 10/8-1/8 | 10/8 | G1/8 | 6,5 | 16,5 | 21,5 | 13 | 14 | 16 | 19 | |
| 1463 10/8-1/4 | 10/8 | G1/4 | 6,5 | 16,5 | 28 | 19,5 | 17 | 16 | 28 | |
| 1463 10/8-3/8 | 10/8 | G3/8 | 6,5 | 16,5 | 29 | 20,5 | 20 | 16 | 31 | |
| 1463 10/8-1/2 | 10/8 | G1/2 | 6,5 | 16,5 | 33 | 24,5 | 24 | 16 | 43 | |
| 1463 12/10-3/8 | 12/10 | G3/8 | 8,5 | 18 | 30,5 | 20,5 | 20 | 19 | 37 | |

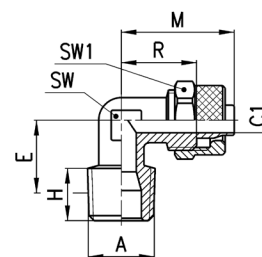
Raccordi Mod. 1541

Gomito Maschio Girevole Sprint®


DIMENSIONI

| Mod. | Tubo | A | C1 | E | H | M | R | SW | SW1 | SW2 | Peso (g) |
|----------------------|------|------|-----|----|-----|------|----|----|-----|-----|----------|
| 1541 6/4-1/8 | 6/4 | G1/8 | 3 | 15 | 5,5 | 22,5 | 15 | 12 | 10 | 12 | 22 |
| 1541 6/4-1/4 | 6/4 | G1/4 | 3 | 15 | 7 | 22,5 | 15 | 12 | 10 | 14 | 27 |
| 1541 8/6-1/8 | 8/6 | G1/8 | 5 | 15 | 5,5 | 22,5 | 15 | 14 | 10 | 12 | 23 |
| 1541 8/6-1/4 | 8/6 | G1/4 | 5 | 15 | 7 | 22,5 | 15 | 14 | 10 | 14 | 28 |
| 1541 10/8-1/4 | 10/8 | G1/4 | 6,5 | 16 | 7 | 25,5 | 17 | 16 | 12 | 14 | 35 |

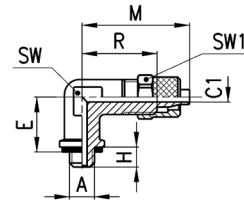
Raccordi Mod. 1500

 Gomito Maschio Fisso
Metrico-Conico

DIMENSIONI

| Mod. | Tubo | A | C1 | E | H | M | R | SW | SW1 | Peso (g) |
|--------------------------|---------|----------|-----|------|------|------|------|----|-----|----------|
| 1500 5/3-1/8 | 5/3 | R1/8 | 2 | 13 | 7,5 | 21,5 | 15 | 8 | 8 | 11 |
| 1500 6/4-1/8 | 6/4 | R1/8 | 3 | 13 | 7,5 | 22,5 | 15 | 8 | 12 | 15 |
| 1500 6/4-1/4 | 6/4 | R1/4 | 3 | 15,5 | 11 | 22,5 | 15 | 10 | 12 | 21 |
| 1500 6/4-3/8 | 6/4 | R3/8 | 3 | 17 | 11,5 | 23,5 | 16 | 12 | 12 | 27 |
| 1500 6/4-M12x1,25 | 6/4 | M12x1,25 | 3 | 14 | 10 | 22,5 | 15 | 10 | 12 | 18 |
| 1500 8/6-1/8 | 8/6 | R1/8 | 5 | 13 | 7,5 | 22,5 | 15 | 10 | 14 | 19 |
| 1500 8/6-1/4 | 8/6 | R1/4 | 5 | 15,5 | 11 | 22,5 | 15 | 10 | 14 | 21 |
| 1500 8/6-3/8 | 8/6 | R3/8 | 5 | 17 | 11,5 | 24 | 16 | 12 | 14 | 29 |
| 1500 8/6-1/2 | 8/6 | R1/2 | 5 | 21,5 | 14 | 27 | 19 | 16 | 14 | 48 |
| 1500 10/8-1/8 | 10/8 | R1/8 | 6,5 | 15 | 7,5 | 25,5 | 17 | 12 | 16 | 29 |
| 1500 10/8-1/4 | 10/8 | R1/4 | 6,5 | 17 | 11 | 25,5 | 17 | 12 | 16 | 29 |
| 1500 10/8-3/8 | 10/8 | R3/8 | 6,5 | 16,5 | 11,5 | 25,5 | 17 | 12 | 16 | 33 |
| 1500 10/8-1/2 | 10/8 | R1/2 | 6,5 | 21 | 14 | 28,5 | 20 | 16 | 16 | 58 |
| 1500 12/10-3/8 | 12/10 | R3/8 | 8,5 | 19 | 11,5 | 30 | 20 | 14 | 19 | 44 |
| 1500 12/10-1/2 | 12/10 | R1/2 | 8,5 | 21 | 14 | 30,5 | 20,5 | 16 | 19 | 59 |
| 1500 15/12,5-1/2 | 15/12,5 | R1/2 | 11 | 21 | 14 | 34 | 22,5 | 16 | 22 | 67 |

Raccordo Mod. 1501 5/3-M5

Gomito Maschio Fisso Metrico

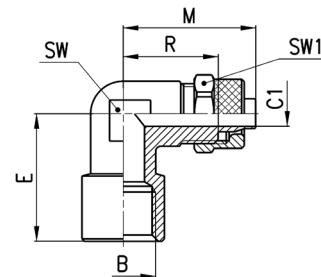


DIMENSIONI

| Mod. | Tubo | A | C1 | E | H | M | R | SW | SW1 | Peso (g) |
|--------------------|------|----|----|----|---|------|----|----|-----|----------|
| 1501 5/3-M5 | 5/3 | M5 | 2 | 11 | 4 | 21,5 | 15 | 8 | 8 | 10 |

Raccordi Mod. 1493

Gomito Femmina Cilindrico

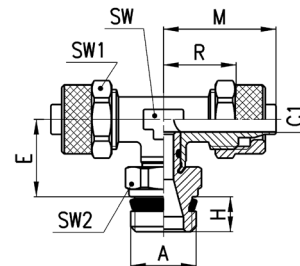


DIMENSIONI

| Mod. | Tubo | B | C1 | E | M | R | SW | SW1 | Peso (g) |
|-----------------------|-------|------|-----|------|------|------|----|-----|----------|
| 1493 6/4-1/8 | 6/4 | G1/8 | 3 | 19 | 22,5 | 15 | 10 | 12 | 20 |
| 1493 6/4-1/4 | 6/4 | G1/4 | 3 | 23,5 | 26 | 18,5 | 14 | 12 | 34 |
| 1493 8/6-1/8 | 8/6 | G1/8 | 5 | 19 | 22,5 | 15 | 10 | 14 | 21 |
| 1493 8/6-1/4 | 8/6 | G1/4 | 5 | 23,5 | 26 | 19 | 14 | 14 | 34 |
| 1493 10/8-1/4 | 10/8 | G1/4 | 6,5 | 23,5 | 27,5 | 18 | 14 | 16 | 39 |
| 1493 12/10-3/8 | 12/10 | G3/8 | 8,5 | 24,5 | 30,5 | 20,5 | 16 | 19 | 53 |

Raccordi Mod. 1431

T Maschio Girevole Sprint®

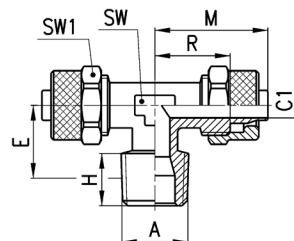


DIMENSIONI

| Mod. | Tubo | A | C1 | E | H | M | R | SW | SW1 | SW2 | Peso (g) |
|----------------------|------|------|-----|----|-----|------|----|----|-----|-----|----------|
| 1431 6/4-1/8 | 6/4 | G1/8 | 3 | 15 | 5,5 | 22,5 | 15 | 10 | 12 | 12 | 32 |
| 1431 6/4-1/4 | 6/4 | G1/4 | 3 | 15 | 7 | 22,5 | 15 | 10 | 12 | 14 | 38 |
| 1431 8/6-1/8 | 8/6 | G1/8 | 5 | 15 | 5,5 | 22,5 | 15 | 10 | 14 | 12 | 36 |
| 1431 8/6-1/4 | 8/6 | G1/4 | 5 | 15 | 7 | 22,5 | 15 | 10 | 14 | 14 | 41 |
| 1431 10/8-1/4 | 10/8 | G1/4 | 6,5 | 16 | 7 | 25,5 | 17 | 12 | 16 | 14 | 54 |

Raccordi Mod. 1410

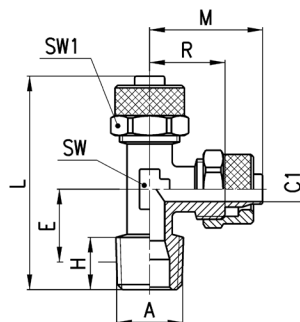
T Maschio Fisso Conico


DIMENSIONI

| Mod. | Tubo | A | C1 | E | H | M | R | SW | SW1 | Peso (g) |
|------------------|---------|------|-----|------|------|------|------|----|-----|----------|
| 1410 5/3-1/8 | 5/3 | R1/8 | 2 | 12,5 | 7,5 | 21,5 | 15 | 8 | 8 | 16 |
| 1410 6/4-1/8 | 6/4 | R1/8 | 3 | 12,5 | 7,5 | 22,5 | 15 | 8 | 12 | 25 |
| 1410 6/4-1/4 | 6/4 | R1/4 | 3 | 15,5 | 11 | 22,5 | 15 | 10 | 12 | 32 |
| 1410 8/6-1/8 | 8/6 | R1/8 | 5 | 13 | 7,5 | 22,5 | 15 | 10 | 14 | 31 |
| 1410 8/6-1/4 | 8/6 | R1/4 | 5 | 15,5 | 11 | 22,5 | 15 | 10 | 14 | 35 |
| 1410 10/8-1/8 | 10/8 | R1/8 | 6,5 | 15 | 7,5 | 25,5 | 17 | 12 | 16 | 47 |
| 1410 10/8-1/4 | 10/8 | R1/4 | 6,5 | 17 | 11 | 25,5 | 17 | 12 | 16 | 50 |
| 1410 10/8-1/2 | 10/8 | R1/2 | 6,5 | 21,5 | 14 | 28,5 | 20 | 16 | 16 | 80 |
| 1410 12/10-3/8 | 12/10 | R3/8 | 8,5 | 19 | 11,5 | 30 | 20 | 14 | 19 | 77 |
| 1410 12/10-1/2 | 12/10 | R1/2 | 8,5 | 21,5 | 14 | 30,5 | 20,5 | 16 | 19 | 92 |
| 1410 15/12,5-1/2 | 15/12,5 | R1/2 | 11 | 21,5 | 14 | 34 | 22,5 | 16 | 22 | 107 |

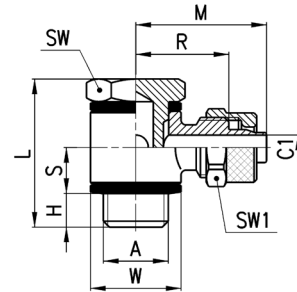
Raccordi Mod. 1420

T Maschio Laterale Conico


DIMENSIONI

| Mod. | Tubo | A | C1 | E | H | L | M | R | SW | SW1 | Peso (g) |
|---------------|------|------|-----|------|-----|------|------|----|----|-----|----------|
| 1420 5/3-1/8 | 5/3 | R1/8 | 2 | 12,5 | 7,5 | 37,5 | 21,5 | 15 | 8 | 8 | 15 |
| 1420 6/4-1/8 | 6/4 | R1/8 | 3 | 12,5 | 7,5 | 38,5 | 22,5 | 15 | 8 | 12 | 23 |
| 1420 6/4-1/4 | 6/4 | R1/4 | 3 | 15,5 | 11 | 43 | 22,5 | 15 | 10 | 12 | 29 |
| 1420 8/6-1/8 | 8/6 | R1/8 | 5 | 13 | 7,5 | 39 | 22,5 | 15 | 10 | 14 | 31 |
| 1420 8/6-1/4 | 8/6 | R1/4 | 5 | 15,5 | 11 | 43 | 22,5 | 15 | 10 | 14 | 34 |
| 1420 10/8-1/8 | 10/8 | R1/8 | 6,5 | 15 | 7,5 | 43,5 | 25,5 | 17 | 12 | 16 | 46 |
| 1420 10/8-1/4 | 10/8 | R1/4 | 6,5 | 17 | 11 | 47 | 25,5 | 17 | 12 | 16 | 50 |

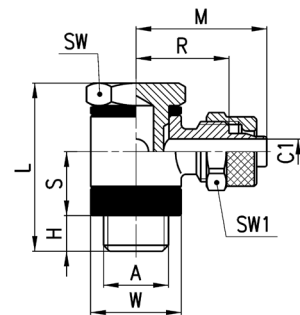
Raccordi Mod. 1521

Vite Cava Metrica-Cilindrica Orientabile
con Anello Singolo

DIMENSIONI

| Mod. | Tubo | A | C1 | H | L | S | M | R | W | SW | SW1 | Peso (g) |
|--------------|------|------|----|---|------|-----|------|------|------|----|-----|----------|
| 1521 5/3-M5 | 5/3 | M5 | 2 | 3 | 18 | 4,5 | 17 | 10,5 | Ø 9 | 8 | 8 | 10 |
| 1521 5/3-1/8 | 5/3 | G1/8 | 2 | 6 | 27 | 8,5 | 22,5 | 16 | Ø 14 | 14 | 8 | 26 |
| 1521 6/4-M5 | 6/4 | M5 | 3 | 3 | 18 | 4,5 | 18 | 10,5 | Ø 9 | 8 | 9 | 11 |
| 1521 6/4-1/8 | 6/4 | G1/8 | 3 | 6 | 27 | 8,5 | 24 | 16,5 | Ø 14 | 14 | 12 | 31 |
| 1521 6/4-1/4 | 6/4 | G1/4 | 3 | 8 | 29,5 | 8,5 | 26 | 18,5 | Ø 18 | 17 | 12 | 48 |
| 1521 6/4-3/8 | 6/4 | G3/8 | 3 | 8 | 30 | 8,5 | 28 | 20,5 | Ø 21 | 19 | 12 | 57 |
| 1521 8/6-1/8 | 8/6 | G1/8 | 5 | 6 | 27 | 8,5 | 24 | 16,5 | Ø 14 | 14 | 14 | 34 |
| 1521 8/6-1/4 | 8/6 | G1/4 | 5 | 8 | 29,5 | 8,5 | 26 | 18,5 | Ø 18 | 17 | 14 | 46 |
| 1521 8/6-3/8 | 8/6 | G3/8 | 5 | 8 | 30 | 8,5 | 28 | 20,5 | Ø 21 | 19 | 14 | 64 |

Raccordi Mod. 1525

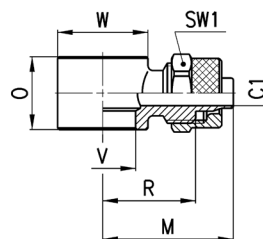
Vite Cava Lunga Cilindrica Orientabile
con Anello Singolo

DIMENSIONI

| Mod. | Tubo | A | C1 | H | L | S | M | R | W | SW | SW1 | Peso (g) |
|------------------|---------|------|-----|---|------|------|------|------|-----|----|-----|----------|
| 1525 6/4-1/8 | 6/4 | G1/8 | 3 | 6 | 31 | 12,5 | 24 | 16,5 | Ø14 | 14 | 12 | 35 |
| 1525 6/4-1/4 | 6/4 | G1/4 | 3 | 8 | 33,5 | 12,5 | 26 | 18,5 | Ø18 | 17 | 12 | 48 |
| 1525 6/4-3/8 | 6/4 | G3/8 | 3 | 8 | 34 | 12,5 | 28 | 20,5 | Ø21 | 19 | 12 | 60 |
| 1525 8/6-1/8 | 8/6 | G1/8 | 5 | 6 | 31 | 12,5 | 24 | 16,5 | Ø14 | 14 | 14 | 35 |
| 1525 8/6-1/4 | 8/6 | G1/4 | 5 | 8 | 33,5 | 12,5 | 26 | 18,5 | Ø18 | 17 | 14 | 54 |
| 1525 8/6-3/8 | 8/6 | G3/8 | 5 | 8 | 34 | 12,5 | 28 | 20,5 | Ø21 | 19 | 14 | 64 |
| 1525 10/8-1/8 | 10/8 | G1/8 | 6,5 | 6 | 31 | 12,5 | 25 | 16,5 | Ø14 | 14 | 16 | 38 |
| 1525 10/8-1/4 | 10/8 | G1/4 | 6,5 | 8 | 33,5 | 12,5 | 27 | 18,5 | Ø18 | 17 | 16 | 57 |
| 1525 10/8-3/8 | 10/8 | G3/8 | 6,5 | 8 | 34 | 12,5 | 29,5 | 21 | Ø21 | 19 | 16 | 69 |
| 1525 10/8-1/2 | 10/8 | G1/2 | 6,5 | 9 | 35 | 12,5 | 32 | 23,5 | Ø26 | 27 | 16 | 112 |
| 1525 12/10-3/8 | 12/10 | G3/8 | 8 | 8 | 34 | 12,5 | 31,5 | 21,5 | Ø21 | 19 | 19 | 77 |
| 1525 12/10-1/2 | 12/10 | G1/2 | 8,5 | 9 | 35 | 12,5 | 33,5 | 23,5 | Ø26 | 27 | 19 | 111 |
| 1525 15/12,5-1/2 | 15/12,5 | G1/2 | 11 | 9 | 35 | 12,5 | 36,5 | 25 | Ø26 | 27 | 22 | 120 |

Raccordi Mod. 1610

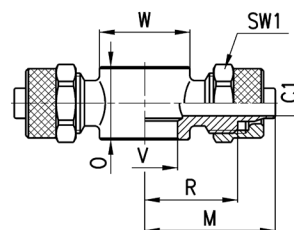
Anello Singolo



| DIMENSIONI | | | | | | | | | | |
|------------------|---------|-----|------|------|------|------|------|-----|----------|------------------------------|
| Mod. | Tubo | C1 | M | O | R | V | W | SW1 | Peso (g) | assemblabile con Mod. |
| 1610 5/3-M5 | 5/3 | 2 | 17 | 9 | 10.5 | 5.1 | Ø 9 | 8 | 8 | 1631, 1635 |
| 1610 5/3-M6 | 5/3 | 2 | 17 | 9 | 10.5 | 5.1 | Ø 9 | 8 | 7 | SCU, SVU, SCO... |
| 1610 5/3-1/8 | 5/3 | 2 | 22.5 | 14.5 | 16 | 9.8 | Ø 14 | 8 | 13 | 1631, 1635, SCU, SVU, SCO... |
| 1610 6/4-M5 | 6/4 | 3 | 18 | 9 | 10.5 | 5.1 | Ø 9 | 9 | 8 | 1631, 1635 |
| 1610 6/4-M6 | 6/4 | 2 | 18 | 9 | 10.5 | 5.1 | Ø 9 | 9 | 8 | SCU, SVU, SCO... |
| 1610 6/4-1/8 | 6/4 | 3 | 24 | 14.5 | 16.5 | 9.8 | Ø 14 | 12 | 18 | 1631, 1635, SCU, SVU, SCO... |
| 1610 6/4-1/4 | 6/4 | 3 | 26 | 14.5 | 18.5 | 13.2 | Ø 18 | 12 | 21 | 1631, 1635, SCU, SVU, SCO... |
| 1610 6/4-3/8 | 6/4 | 3 | 28 | 14.5 | 20.5 | 16.7 | Ø 21 | 12 | 22 | 1631, 1635, SCU, SVU, SCO... |
| 1610 8/6-1/8 | 8/6 | 5 | 24 | 14.5 | 16.5 | 9.8 | Ø 14 | 14 | 19 | 1631, 1635, SCU, SVU, SCO... |
| 1610 8/6-1/4 | 8/6 | 5 | 26 | 14.5 | 18.5 | 13.2 | Ø 18 | 14 | 22 | 1631, 1635, SCU, SVU, SCO... |
| 1610 8/6-3/8 | 8/6 | 5 | 28 | 14.5 | 20.5 | 16.7 | Ø 21 | 14 | 25 | 1631, 1635, SCU, SVU, SCO... |
| 1610 10/8-1/8 | 10/8 | 6.5 | 25 | 14.5 | 16.5 | 9.8 | Ø 14 | 16 | 25 | 1635, SCU, SVU, SCO... |
| 1610 10/8-1/4 | 10/8 | 6.5 | 27 | 14.5 | 18.5 | 13.2 | Ø 18 | 16 | 24 | 1635, SCU, SVU, SCO... |
| 1610 10/8-3/8 | 10/8 | 6.5 | 29.5 | 14.5 | 21 | 16.7 | Ø 21 | 16 | 28 | 1635, SCU, SVU, SCO... |
| 1610 10/8-1/2 | 10/8 | 6.5 | 32 | 14.5 | 23.5 | 21 | Ø 26 | 16 | 35 | 1635 |
| 1610 12/10-3/8 | 12/10 | 8 | 31.5 | 14.5 | 21.5 | 16.7 | Ø 21 | 19 | 36 | 1635, SCU, SVU, SCO... |
| 1610 12/10-1/2 | 12/10 | 8.5 | 33.5 | 14.5 | 23.5 | 21 | Ø 26 | 19 | 40 | 1635 |
| 1610 15/12,5-1/2 | 15/12,5 | 11 | 36.5 | 14.5 | 25 | 21 | Ø 26 | 22 | 48 | 1635 |

Raccordi Mod. 1620

Anello Doppio



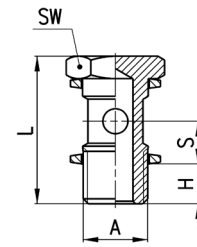
| DIMENSIONI | | | | | | | | | | |
|--------------|------|----|----|------|------|------|------|-----|----------|------------------------------|
| Mod. | Tubo | C1 | M | O | R | V | W | SW1 | Peso (g) | assemblabile con Mod. |
| 1620 6/4-M5 | 6/4 | 3 | 18 | 9 | 10.5 | 5.1 | Ø 9 | 9 | 12 | 1631, 1635 |
| 1620 6/4-1/8 | 6/4 | 3 | 24 | 14.5 | 16.5 | 9.8 | Ø 14 | 12 | 29 | 1631, 1635, SCU, SVU, SCO... |
| 1620 6/4-1/4 | 6/4 | 3 | 26 | 14.5 | 18.5 | 13.2 | Ø 18 | 12 | 31 | 1631, 1635, SCU, SVU, SCO... |
| 1620 8/6-1/8 | 8/6 | 5 | 24 | 14.5 | 16.5 | 9.8 | Ø 14 | 14 | 31 | 1631, 1635, SCU, SVU, SCO... |
| 1620 8/6-1/4 | 8/6 | 5 | 26 | 14.5 | 18.5 | 13.2 | Ø 18 | 14 | 34 | 1631, 1635, SCU, SVU, SCO... |

Raccordi Mod. 1631 01

Vite Cava Singola



Assemblabili con i raccordi orientabili Mod. 6610;
6620; 1610; 1620; 2023; 1170



DIMENSIONI

| Mod. | A | H | L | S | SW | Peso (g) |
|--------------------|------|---|------|-----|----|----------|
| 1631 01-M5 | M5 | 4 | 18 | 5,5 | 8 | 3 * |
| 1631 01-1/8 | G1/8 | 6 | 27 | 8,5 | 14 | 13 |
| 1631 01-1/4 | G1/4 | 8 | 29,5 | 8,5 | 17 | 24 |
| 1631 01-3/8 | G3/8 | 8 | 30 | 8,5 | 19 | 35 |
| 1631 01-1/2 | G1/2 | 9 | 31 | 8,5 | 27 | 63 |

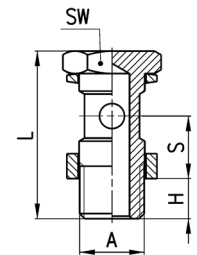
* = Acciaio zincato

Raccordi Mod. 1635 01

Vite Cava Lunga Singola



Assemblabili con i raccordi orientabili modello 6610;
6620; 1610; 1620; 2023; 1170



DIMENSIONI

| Mod. | A | H | L | S | SW | Peso (g) |
|-------------------------|----------|---|------|------|----|----------|
| 1635 01-1/8 | G1/8 | 6 | 31 | 12,5 | 14 | 15 |
| 1635 01-1/4 | G1/4 | 8 | 33,5 | 12,5 | 17 | 27 |
| 1635 01-3/8 | G3/8 | 8 | 34 | 12,5 | 19 | 37 |
| 1635 01-1/2 | G1/2 | 9 | 35 | 12,5 | 27 | 71 |
| 1635 01-M12x1,25 | M12x1,25 | 8 | 33,5 | 12,5 | 17 | 27 * |
| 1635 01-M12x1,5 | M12x1,5 | 8 | 33,5 | 12,5 | 17 | 27 * |

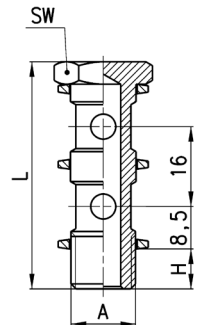
* = modelli assemblabili con
raccordi orientabili da 1/4

Raccordi Mod. 1631 02

Vite Cava Doppia



Assemblabili con i raccordi orientabili modello 6610;
6620; 1610; 1620; 2023; 1170



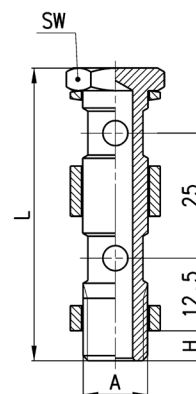
DIMENSIONI

| Mod. | A | H | L | SW | Peso (g) |
|--------------------|------|---|------|----|----------|
| 1631 02-1/8 | G1/8 | 6 | 43 | 14 | 18 |
| 1631 02-1/4 | G1/4 | 8 | 45,5 | 17 | 33 |
| 1631 02-3/8 | G3/8 | 8 | 46 | 19 | 48 |


Raccordi Mod. 1635 02

Vite Cava Lunga Doppia

Assemblabili con i raccordi orientabili modello 6610; 6620; 1610; 1620; 2023; 1170

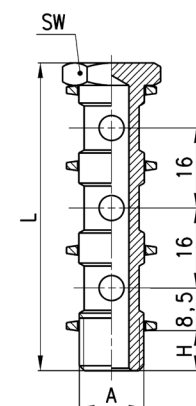

DIMENSIONI

| Mod. | A | H | L | SW | Peso (g) |
|--------------------|------|---|------|----|----------|
| 1635 02-1/8 | G1/8 | 6 | 56 | 14 | 26 |
| 1635 02-1/4 | G1/4 | 8 | 58,5 | 17 | 33 |
| 1635 02-3/8 | G3/8 | 8 | 59 | 19 | 64 |
| 1635 02-1/2 | G1/2 | 9 | 60 | 27 | 111 |


Raccordi Mod. 1631 03

Vite Cava Tripla

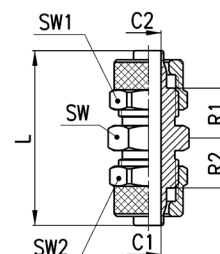
Assemblabili con i raccordi orientabili modello 6610; 6620; 1610; 1620; 2023; 1170


DIMENSIONI

| Mod. | A | H | L | SW | Peso (g) |
|--------------------|------|---|------|----|----------|
| 1631 03-1/8 | G1/8 | 6 | 59 | 14 | 24 |
| 1631 03-1/4 | G1/4 | 8 | 61,5 | 17 | 42 |
| 1631 03-3/8 | G3/8 | 8 | 62 | 19 | 62 |


Raccordi Mod. 1580

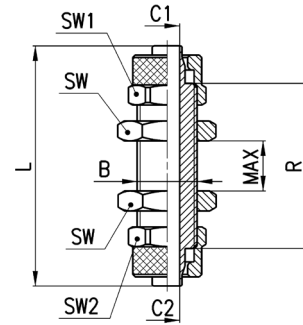
Dritto Intermedio


DIMENSIONI

| Mod. | Tubo | C1 | C2 | L | R1 | R2 | SW | SW1 | SW2 | Peso (g) |
|----------------------|----------|-----|-----|------|------|------|----|-----|-----|----------|
| 1580 5/3 | 5/3 | 2 | 2 | 28,5 | 7,5 | 7,5 | 8 | 8 | 8 | 8 |
| 1580 6/4 | 6/4 | 3 | 3 | 34,5 | 10 | 10 | 12 | 12 | 12 | 22 |
| 1580 8/6 | 8/6 | 5 | 5 | 34,5 | 9,75 | 9,75 | 13 | 14 | 14 | 28 |
| 1580 10/8 | 10/8 | 6,5 | 6,5 | 38 | 10,5 | 10,5 | 14 | 16 | 16 | 38 |
| 1580 12/10 | 12/10 | 8,5 | 8,5 | 41 | 10,5 | 10,5 | 17 | 19 | 19 | 55 |
| 1580 15/12,5 | 15/12,5 | 11 | 11 | 45 | 11 | 11 | 22 | 22 | 22 | 80 |
| 1580 8/6-6/4 | 8/6-6/4 | 5 | 3 | 34,5 | 9,75 | 9,75 | 13 | 12 | 14 | 24 |
| 1580 10/8-6/4 | 10/8-6/4 | 6,5 | 3 | 36,5 | 10,5 | 10 | 14 | 12 | 16 | 31 |

Raccordi Mod. 1590

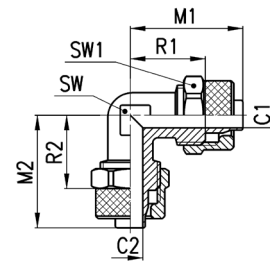
Diritto Passaparete - Ridotto



| DIMENSIONI | | | | | | | | | | | |
|--------------|---------|---------|-----|-----|----|----|-----|----|-----|-----|----------|
| Mod. | Tubo | B | C1 | C2 | L | R | MAX | SW | SW1 | SW2 | Peso (g) |
| 1590 5/3 | 5/3 | M7x0,75 | 2 | 2 | 40 | 27 | 9 | 8 | 8 | 8 | 12 |
| 1590 6/4 | 6/4 | M10x1 | 3 | 3 | 48 | 33 | 14 | 14 | 12 | 12 | 33 |
| 1590 8/6 | 8/6 | M12x1 | 5 | 5 | 48 | 33 | 12 | 17 | 14 | 14 | 43 |
| 1590 10/8 | 10/8 | M14x1 | 6,5 | 6,5 | 48 | 31 | 10 | 17 | 16 | 16 | 52 |
| 1590 12/10 | 12/10 | M16x1 | 8,5 | 8,5 | 53 | 33 | 10 | 19 | 19 | 19 | 71 |
| 1590 6/4-5/3 | 6/4-5/3 | M10x1 | 3 | 2 | 48 | 34 | 14 | 14 | 12 | 12 | 33 |
| 1590 8/6-6/4 | 8/6-6/4 | M12x1 | 5 | 3 | 48 | 33 | 12 | 17 | 14 | 14 | 44 |

Raccordi Mod. 1550

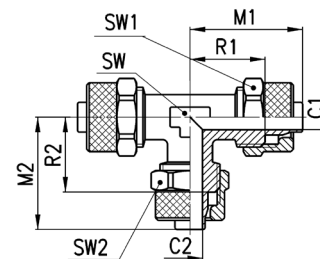
Gomito Intermedio



| DIMENSIONI | | | | | | | | | | |
|--------------|---------|-----|-----|------|------|------|------|----|-----|----------|
| Mod. | Tubo | C1 | C2 | M1 | M2 | R1 | R2 | SW | SW1 | Peso (g) |
| 1550 6/4 | 6/4 | 3 | 3 | 22,5 | 22,5 | 15 | 15 | 8 | 12 | 21 |
| 1550 8/6 | 8/6 | 5 | 5 | 22,5 | 22,5 | 15 | 15 | 10 | 14 | 27 |
| 1550 10/8 | 10/8 | 6,5 | 6,5 | 25,5 | 25,5 | 17 | 17 | 12 | 16 | 40 |
| 1550 12/10 | 12/10 | 8,5 | 8,5 | 30 | 30 | 20 | 20 | 14 | 19 | 61 |
| 1550 15/12,5 | 15/12,5 | 11 | 11 | 34 | 34 | 22,5 | 22,5 | 16 | 22 | 88 |

Raccordi Mod. 1540

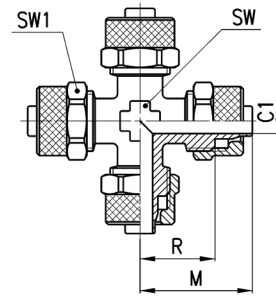
T Intermedio



| DIMENSIONI | | | | | | | | | | | |
|---------------|----------|-----|-----|------|------|------|------|----|-----|-----|----------|
| Mod. | Tubo | C1 | C2 | M1 | M2 | R1 | R2 | SW | SW1 | SW2 | Peso (g) |
| 1540 5/3 | 5/3 | 2 | 2 | 21,5 | 21,5 | 15 | 15 | 8 | 8 | 8 | 17 |
| 1540 6/4 | 6/4 | 3 | 3 | 22,5 | 22,5 | 15 | 15 | 8 | 12 | 12 | 31 |
| 1540 8/6 | 8/6 | 5 | 5 | 22,5 | 22,5 | 15 | 15 | 10 | 14 | 14 | 39 |
| 1540 10/8 | 10/8 | 6,5 | 6,5 | 25,5 | 25,5 | 17 | 17 | 12 | 16 | 16 | 58 |
| 1540 12/10 | 12/10 | 8,5 | 8,5 | 30 | 30 | 20 | 20 | 14 | 19 | 19 | 90 |
| 1540 15/12,5 | 15/12,5 | 11 | 11 | 34 | 34 | 22,5 | 22,5 | 16 | 22 | 22 | 128 |
| 1540 8/6-6/4 | 8/6-6/4 | 5 | 3 | 22,5 | 22,5 | 15 | 15 | 10 | 14 | 12 | 38 |
| 1540 10/8-6/4 | 10/8-6/4 | 6,5 | 3 | 25,5 | 23,5 | 17 | 16,5 | 12 | 16 | 12 | 50 |
| 1540 10/8-8/6 | 10/8-8/6 | 6,5 | 5 | 25,5 | 24 | 17 | 16,5 | 12 | 16 | 14 | 53 |

Raccordi Mod. 1600

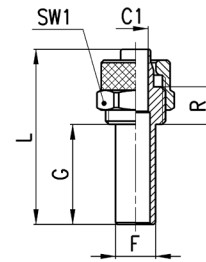
Croce Intermedia


DIMENSIONI

| Mod. | Tubo | C1 | M | R | SW | SW1 | Peso (g) |
|-----------------|------|----|------|----|----|-----|----------|
| 1600 6/4 | 6/4 | 3 | 22,5 | 15 | 8 | 12 | 41 |
| 1600 8/6 | 8/6 | 5 | 22,5 | 15 | 10 | 14 | 52 |

Raccordi Mod. 1470

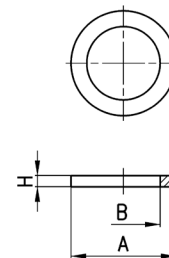
Adattatore con Codolo


DIMENSIONI

| Mod. | Tubo | F | C1 | G | L | R | SW1 | Peso (g) |
|-----------------|------|---|----|----|----|-----|-----|----------|
| 1470 6/4 | 6/4 | 6 | 3 | 20 | 35 | 7,5 | 12 | 11 |
| 1470 8/6 | 8/6 | 8 | 5 | 20 | 35 | 7,5 | 14 | 15 |

Accessori Mod. 2651

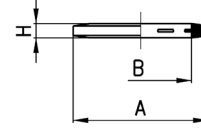
Anello di tenuta in alluminio


DIMENSIONI

| Mod. | A | B | H | Peso (g) |
|-----------------|------|------|-----|----------|
| 2651 1/8 | 14 | 9,8 | 1,5 | 1 |
| 2651 1/4 | 18 | 13,2 | 1,5 | 1 |
| 2651 3/8 | 22 | 16,7 | 1,5 | 1 |
| 2651 1/2 | 26 | 20,9 | 1,5 | 1 |
| 2651 1 | 38,5 | 33,4 | 1,5 | 2 |

Accessori Mod. 2661

Anello di tenuta dentellata in plastica

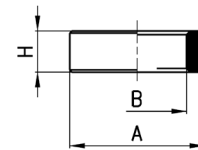


DIMENSIONI

| Mod. | A | B | H | Peso (g) |
|-----------------|-----|------|-----|----------|
| 2661 M3 | 4,9 | 2,8 | 0,7 | 1 |
| 2661 M5 | 8 | 5,2 | 1 | 1 |
| 2661 M6 | 9 | 6,2 | 1 | 1 |
| 2661 1/8 | 14 | 10,2 | 1,9 | 1 |
| 2661 1/4 | 18 | 13,5 | 1,9 | 1 |
| 2661 3/8 | 21 | 16,5 | 2,1 | 1 |
| 2661 1/2 | 26 | 21,2 | 1,9 | 1 |

Accessori Mod. 2665

Anello di tenuta in plastica

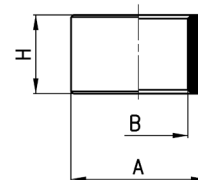
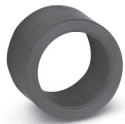


DIMENSIONI

| Mod. | A | B | H | Peso (g) |
|-----------------|----|------|---|----------|
| 2665 1/8 | 14 | 9,8 | 5 | 1 |
| 2665 1/4 | 18 | 13,2 | 5 | 1 |
| 2665 3/8 | 21 | 16,8 | 5 | 1 |
| 2665 1/2 | 26 | 21,1 | 5 | 1 |

Accessori Mod. 2669

Anello di tenuta alto in plastica

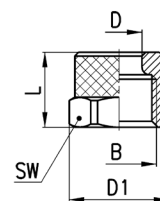


DIMENSIONI

| Mod. | A | B | H | Peso (g) |
|-----------------|----|------|----|----------|
| 2669 1/8 | 14 | 9,8 | 10 | 1 |
| 2669 1/4 | 18 | 13,2 | 10 | 2 |
| 2669 3/8 | 21 | 16,8 | 10 | 2 |
| 2669 1/2 | 26 | 21,1 | 10 | 2 |

Accessori Mod. 1703

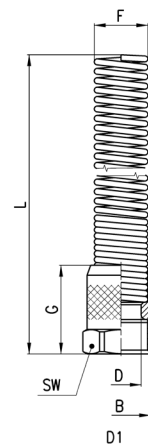
Dado di bloccaggio



| DIMENSIONI | | | | | | | |
|---------------------------|---------|---------|-------|------|------|----|----------|
| Mod. | Tubo | B | D | D1 | L | SW | Peso (g) |
| 1703 5/3-M7x0,75 | 5/3 | M7x0,75 | 5,1 | 8,8 | 8,5 | 8 | 1 |
| 1703 6/4-M8x0,75 | 6/4 | M8x0,75 | 6,1 | 9,8 | 8,5 | 9 | 2 |
| 1703 6/4-M10x1 | 6/4 | M10x1 | 6,1 | 13,3 | 10 | 12 | 4 |
| 1703 8/6-M12x1 | 8/6 | M12x1 | 8,2 | 15,5 | 10 | 14 | 5 |
| 1703 10/8-M14x1 | 10/8 | M14x1 | 10,15 | 17,5 | 13 | 16 | 8 |
| 1703 12/10-M16x1 | 12/10 | M16x1 | 12,2 | 21 | 13,5 | 19 | 12 |
| 1703 15/12,5-M20x1 | 15/12,5 | M20x1 | 15,2 | 24,5 | 16 | 22 | 15 |

Accessori Mod. 1723

Dado di bloccaggio con Molla in metallo



| DIMENSIONI | | | | | | | | | |
|---------------------------|---------|-------|------|-------|------|------|------|----|----------|
| Mod. | Tubo | B | F | D | D1 | G | L | SW | Peso (g) |
| 1723 6/4-M10x1 | 6/4 | M10x1 | 8,9 | 6,1 | 13,3 | 18 | 90,5 | 12 | 15 |
| 1723 8/6-M12x1 | 8/6 | M12x1 | 10,9 | 8,2 | 15,5 | 18 | 94,5 | 14 | 23 |
| 1723 10/8-M14x1 | 10/8 | M14x1 | 12,5 | 10,15 | 17,5 | 22 | 96,5 | 16 | 29 |
| 1723 12/10-M16x1 | 12/10 | M16x1 | 15,5 | 12,2 | 21 | 23,5 | 108 | 19 | 46 |
| 1723 15/12,5-M20x1 | 15/12,5 | M20x1 | 18,5 | 15,2 | 24,5 | 28 | 120 | 22 | 57 |