



PIGNONI

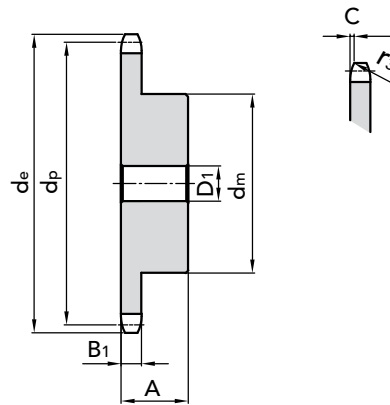
1/2" x 1/4" rullo 8.51

PIGNONE

Raggio dente r_3	13	mm
Larghezza raggio C	1,3	mm
Larghezza dente pignone B_1	5,9	mm

CATENA

Passo	12,7	mm
Larghezza interna	6,4	mm
Rullo \varnothing	8,51	mm



SEMPLICI

	d_e	d_p	CODICE	d_m	D_1	A	kg.
8	37,68	33,18	10114008	20	8	25	0,45
9	41,62	37,13	10114009	24	8	25	
11	49,57	45,07	10114011	29	8	25	
15	65,57	61,09	10114015	45	8	28	
16							
17							
19	81,65	77,16	10114019	60	8	28	
21							
22	93,73	89,24	10114022	70	10	28	
23	97,76	93,27	10114023	70	10	28	
25	105,82	101,33	10114025	70	10	28	
26	109,85	105,36	10114026	70	10	30	
27	113,89	109,40	10114027	70	10	30	
28	117,92	113,42	10114028	70	10	30	
29	121,95	117,46	10114029	80	10	30	
30	125,99	121,50	10114030	80	10	30	
31	130,02	125,54	10114031	90	10	30	
32	134,06	129,56	10114032	90	10	30	
33	138,10	133,60	10114033	90	12	30	
34	142,13	137,64	10114034	90	12	30	
35	146,17	141,68	10114035	90	12	30	
36	150,21	145,72	10114036	90	12	35	
38	158,28	153,80	10114038	90	12	35	
39							
40	166,36	161,87	10114040	90	12	35	

MATERIALE C 45 UNI 7845

